

Patterning JET-PE 360/600 series

High accuracy ideal inkjet printer for printed electronics field.

- Patterning JET-PE is equipped with standard features required for device fabrication.
- Head drive conditions adjustable (voltage, pulse, frequency, temperature etc.)
- You can extract printing conditions and improve work efficiency with optional functions.

Appearance



This image is our company demonstration machine. The actual size is as specified in the specification table.

Features

Material evaluation

1

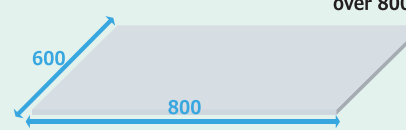


Etching resist , Solder resist , Legend ink, Other

We are accepting paid tests of material compatibility / ejecting condition setting using ink customer wants to evaluate. Please feel free to contact us.

Compatible with large format boards

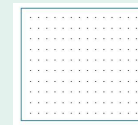
2



Please consult us when printing on board of over 800 x 600 size.

Software correction function

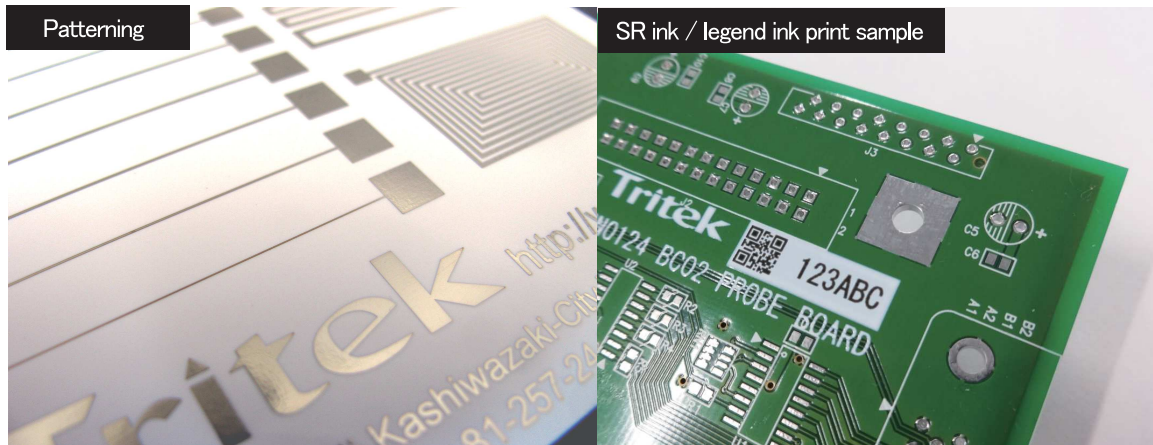
3



Various correction functions

- Axis position/Landing position calibration
- Multiple point alignment
- Nozzle repair function *option

Patterning



SR ink / Legend ink print sample

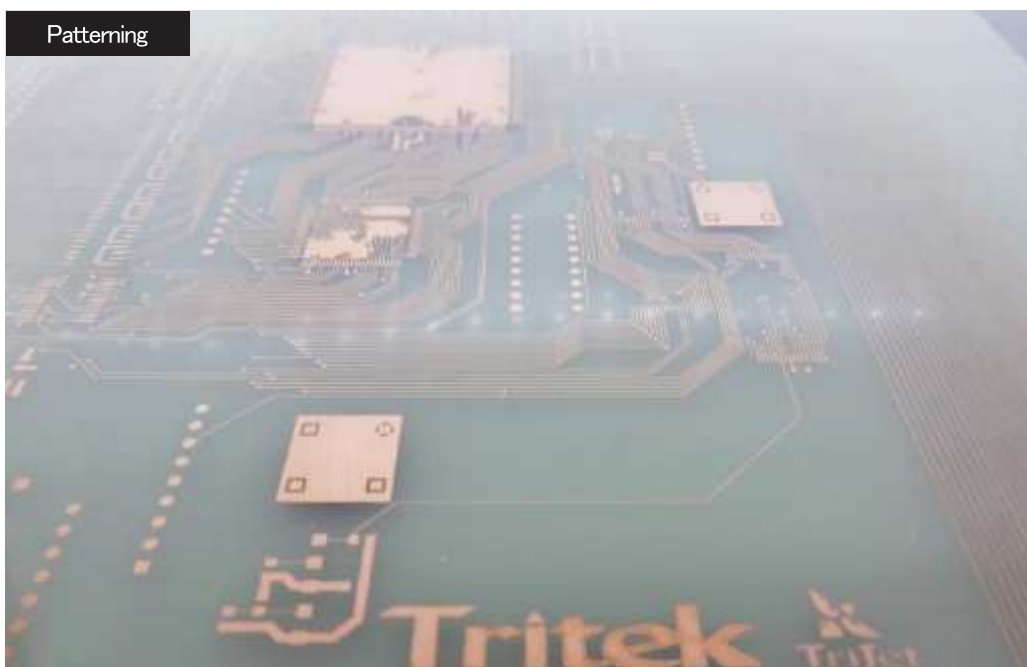
Drop watcher system(option)



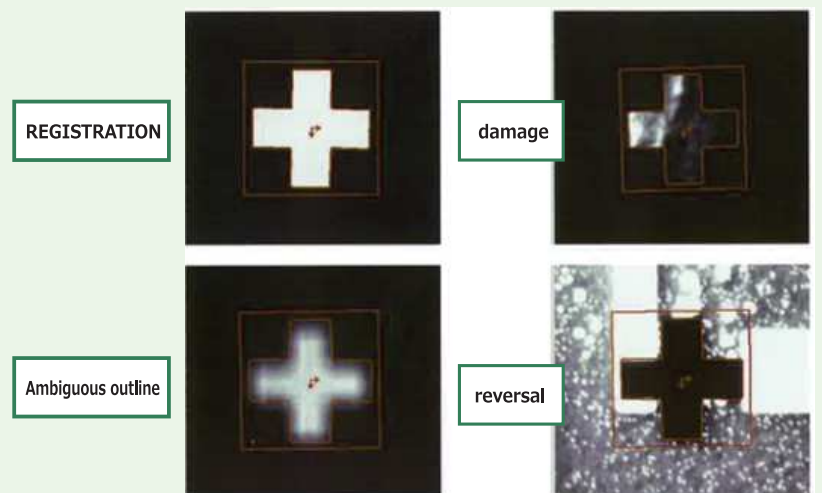
Alignment camera



Patterning



Alignment screen



High robustness , High precision alignment

Contact us

▶▶▶ **TRITEK Co., Ltd.**

〒945-1355 Karuigawa, Kashiwazaki-city, Niigata, Japan

☎ 81-257-24-7123
✉ eigyo@tritek.co.jp

☎ 81-0257-24-7550
🌐 <http://www.tritek.co.jp>



Patterning JET-PE 360/600 series

Line Up

	items	PJPE-360					PJPE-600 *4				
		S1	S2	S4	L2	L4	S1	S2	S4	L2	L4
Specification	Number of inkjet head	1	2	4	2	4	1	2	4	2	4
	Print size (mm) *MAX	300×300			800×600		300×300			800×600	
	X resolution (dpi)	720 / 1080 / 1440 / 2880					600 / 1200 / 1800 / 2400				
	Y resolution (dpi)	720 / 1080 / 1440 / 2880					600 / 1200 / 1800 / 2400				
	Drop size (pl)	6 / 13 / 30					3.5 / 7 / 10				
	Max. frequency *1	60KHz					80KHz				
	Min. line width *2	70~90µm					50~80µm				
	Print speed *3	90sec					60sec				
	Number of ink tank	1	1 or 2				1	1 or 2			
	UV	LED									
	Weight	1500kg~2000kg			2000kg~2500kg		1500kg~2000kg			2000kg~2500kg	
	External size	1750 (W) ×850 (D) ×2000 (H)			1750 (W) ×2000 (D) ×2000 (H)		1750 (W) ×850 (D) ×2000 (H)			1750 (W) ×2000 (D) ×2000 (H)	
	Alignment	High precision alignment with 5 million pixel monochrome camera									
	Supported ink	Symbol , Etching resist , Solder resist , Other									
	Substrate fixing	Ceramic suction table									
	Thickness (MAX)	25mm									
	Data Input Format	BMP, TIFF (RS274X, RS274D, ODB++, DPF, DXF, ... Convertible with software)									
	Calibration mode	Axis position/Landing position calibration									
	Multiple point alignment	Normally 2 to 4 alignment points, 5 points or more (Option) Distortion/Scaling correction									
	Overprinting	Lamination printing with identical data									
Continuous printing	Continuous printing of multiple data										
Nozzle repair function	(Option)										
Ink ejection observation function	(Option)										
loader/unloader	(Option)										
CAD Gerber conversion tool	(Option)										

*1 Depends on ink types.

*2 Depends on ink types and substrate surface state.

*3 Depends on substrate size, resolution and print condition.

*4 "PJPE-600" is still in development.

Please contact TRITEK for further details.

Issue date : 2021/01/18

The contents of this brochure are subject to change without notice for its technical improvement.

Contact us

▶▶▶ **TRITEK CO., LTD.**

〒945-1355 Karuigawa, Kashiwazaki-city,
Niigata, Japan

☎ 81-257-24-7123

☎ 0257-24-7550

✉ eigyo@tritek.co.jp

🌐 <http://www.tritek.co.jp>