



Kenzai JET-pro

“Kenzai JET-pro” makes possible to print directly on various building materials.
It prints on Metal Siding, FiberCement Siding.



Ink	UV inorganic pigment ink (CMYK)
Work Size	MAX. 4,000×510mm
Software	Windows Application
Productivity	Several thousands m ² ~/mo *It' s changed by a printing condition.

Shuttle Type

This device prints an image by shuttling head on flat bed table. Respond to decoration purpose which is required high quality and small-lot production.

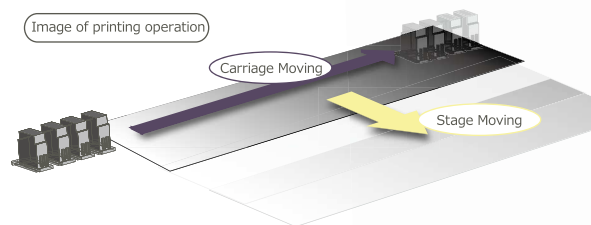
Kenzai JET-Pro



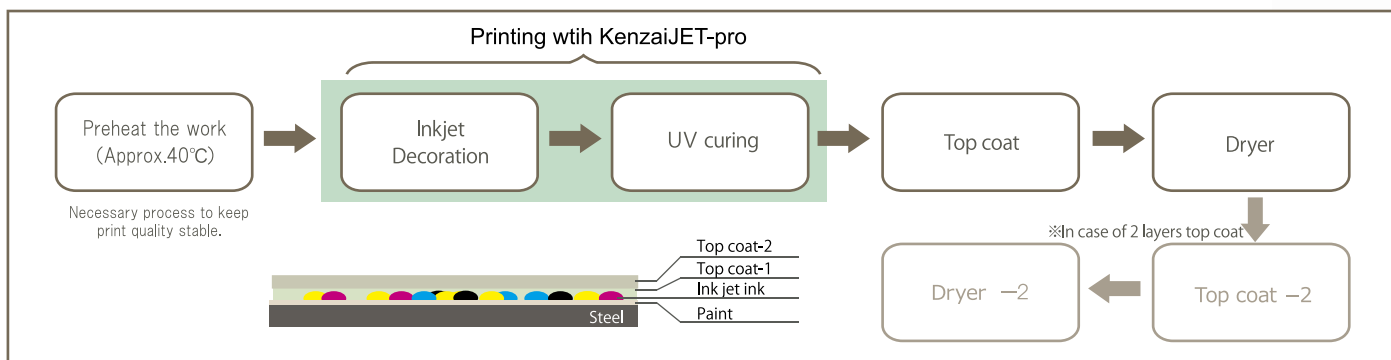
Kenzai JET-Pro

Sample image printed by Kenzai JET-Pro

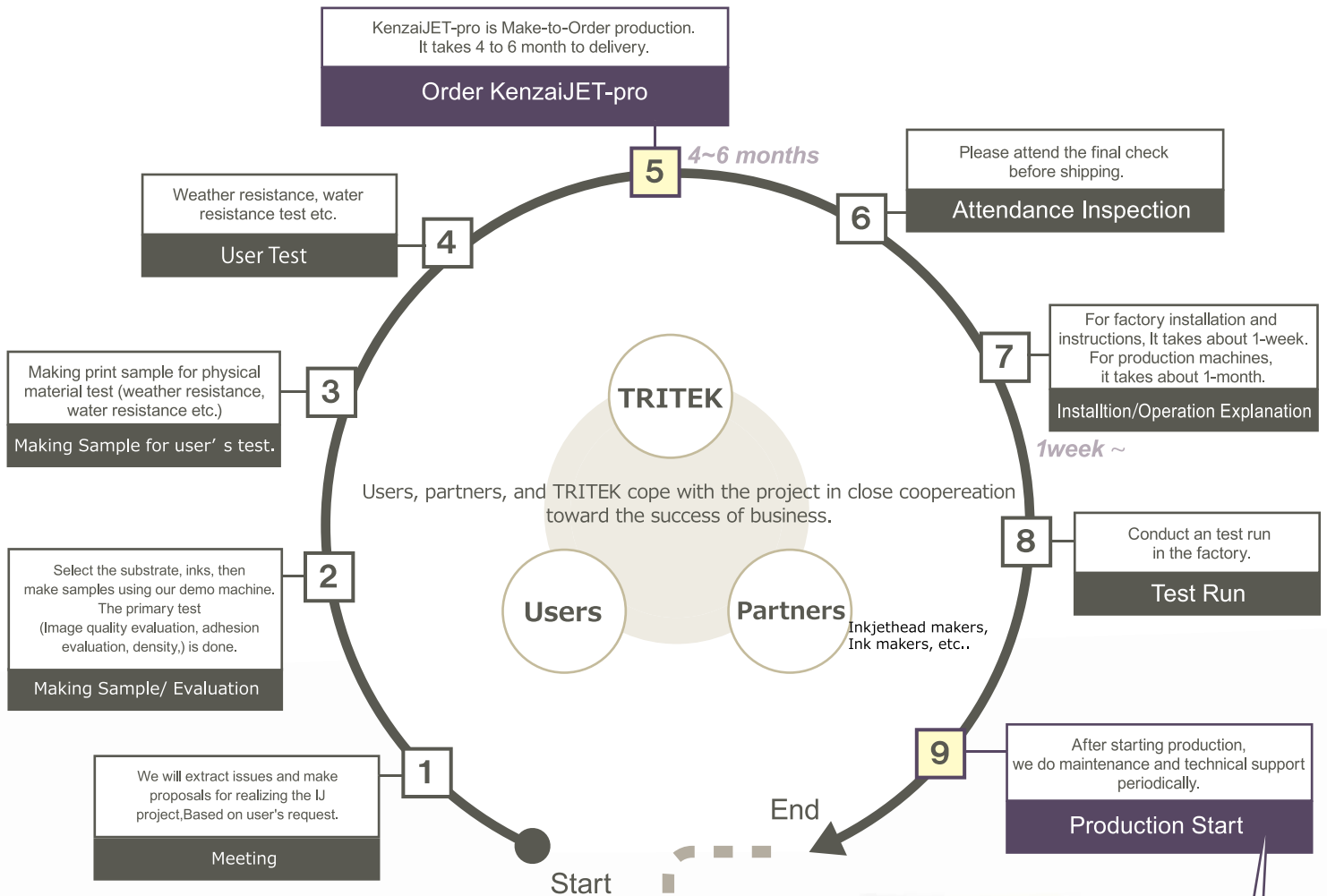
Make come true high design, high density, and high image quality by multi pass printing. Based on our standard specifications, it's possible to customize according to user's request.



Inkjet decoration process to metal siding *Example



Workflow from Enquiry to Delivery



We propose In-line printer as user's request.



After Sales Support

In case of any trouble has occurred in the IJ Printer, send us LOG file by e-mail. Then we will find the cause of trouble and make the countermeasure (Remote Support).

We will handle that by having a business trip either domestic or overseas when it's not possible to correspond in remote support. TRITEK SUZHOU staff will support the customer in China.

To prevent any trouble occurs, we recommend making maintenance contract which include visiting maintenance at twice to 4-times a year.



Bring the workpiece flowing on the production line to one side. Positioning with camera

The Reason Why Kenzai JET-Pro is Selected

1. Proposal with Dedicated Ink

We have dedicated ink for building materials with weather resistance.
Specially designed printer which have done tuning various conditions fitted for dedicated ink.

About Inks

Types

UV Inorganic Pigment Ink for Metal Siding (CMYK)	1L bottle
Ink for Fiber Cement Siding (CMYK)	1L bottle
Cleaner	1L bottle

We arrange suitable ink for building materials for Kenzai JET-pro.
Ink price is according to purchase volume.



The photo is a sample image.

■ Ink exchange method is bottle replacement. ■ It may not get good image quality using recommendation ink depend on materials. Please evaluate and confirm image quality before installtion the device. ■ Please confirm and judge about weather resistance of ink by users. ■ Read SDS on handling inks, and use it keeping expiration date.

2. Specially Designed Specifications for Printing on Building Materials

Kenzai JET-Pro has various functions for printing on building materials such as positioning, mounting JIG respond to various shapes, including self-developed software.

1 Synchronized Printing Function in Synchronize with Embossed Pattern of the Workpiece.

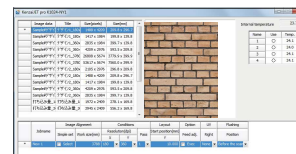
Production method of metal siding is cut off in specified length from base siding.
Due to embossed roll length and cutting length are not synchronized, each embossed shape of siding is different.
Therefore it's necessary to match embossed shape and printing image.
⇒ KenzaiJET-pro makes it possible to match positions at practical level using image processing and other adjustment.

2 Detect Warping Function

Largely warped material is rubbed by scanning of print heads and may cause damage in both IJ head and surface of the workpiece. Kenzai JET-pro has the function to stop printing operation when it detect warping before printing.

3 The mounting JIG can be replaced according to the shape of the building material

4 With just one machine, you can print on both siding and accessories on the exterior wall.



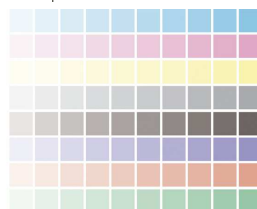
3. Strong Support System

TRITEK widely back up customers from making print samples, evaluation, and consulting to after-sales support.

Making Print Sample/Evaluation

Make print sample for quality check and physical material test with our demo machine before install machine.

Example of Test Pattern

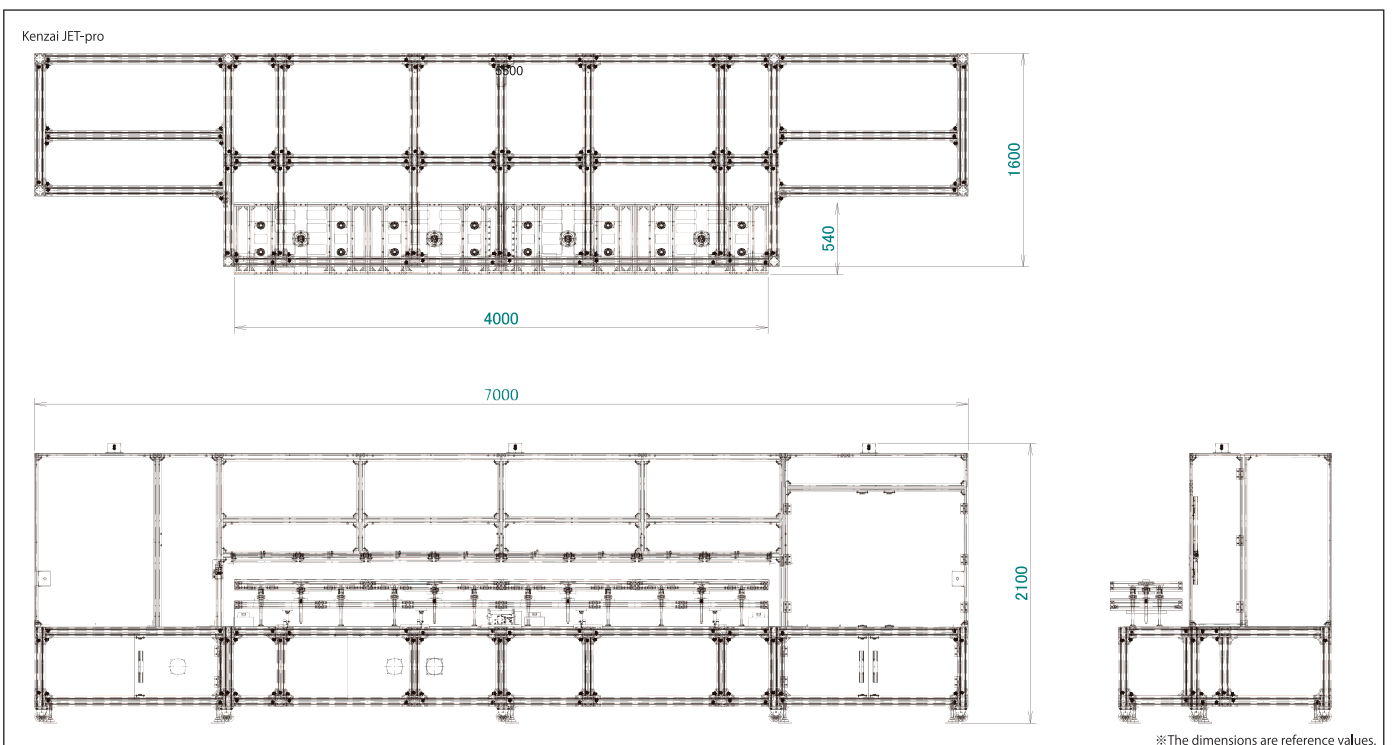


Example of Image Data Imagined OuterWall



KenzaiJET-pro Standard Specifications

Items	Standard Specifications (Customizable)
Print Technology	Drop-on-demand piezoelectric inkjet print head.
Ink	Dedicated UV inorganic pigment ink with high weather resistance. 4colors(CMYK)
Work Size	MAX 4,000×510mm
Productivity	<ul style="list-style-type: none"> • Approx. 1.5minutes at • It takes Approx.1.5minutes for attach/detach work and preparation.Total 3minutes/piece. • 10hrs operation/day and 25days/M, produce 5,000pcs/M, 8,000㎡/M
Printing to Trims	Changing fixing JIG makes possible to set.trims. Possible to respond if trim's height is less than 130mm.
Changing Substrates	Change Fixing JIG.
Warping Detection	The sensor to prevent print head hitting against materials by detecting warping has installed. When it detects warping, stop printing operation. After correct the warping and start printing again.
Synchronize with Embossed Pattern	Cutting position of siding and embossed pattern is random. Printing register mark which synchronized with embossed pattern is necessary. It makes synchronize printing possible by entering the length between the edge of material and register mark.
Print Mode	<ul style="list-style-type: none"> • Standard Mode: 360×180dpi 1-pass • High Quality Mode: 360×360dpi 2-pass
Ink Supply System	Auto Ink Supply from Main Tank
Head Maintenance	Manual Wiping or Auto Wiping
Head Capping	Manual head capping for head protection is attached.
Print Data Format	Tiff File Separated to CMYK
RIP	Option. We can support basic operations.
Image Design	Technical support to convert the image designed by customer to print data is available.
Control Software	Windows Application
Dimensions	Approx. 5,500(W)×1,500(D)×1800mm(H)
Weight	Approx. 1.0t
Safety System	Emergency Stop Switch UV Cover and UV glasses (UV Protection)



■Details of the printer, printing sample, price etc. Please contact us. ■Specification is subject change for improvement. ■You can purchase expendable/maintenance parts from us.
■Colors of pictures in this catalog may different from actual objects. ■Windows is a trademark of Microsoft Corporation registered in the United States.

Contact us

▶▶▶ **Tritek Co., Ltd.** Market reserch dept. Sales group

931-35 Karuigawa, Kashiwazaki-city,
Niigata, 945-1355, Japan
Operation time : 8:30~17:30(weekday)

☎ 0257-24-7123 ☎ 0257-24-7550
🌐 <https://www.tritek.co.jp>

Revised date : 2016/07/25
Contents in this catalog may changes without prior notice.