



Stage JET *IT-1*

“IT-1” is our inkjet printer to decorate on interior materials and large steel plates.



Ink	Exclusive UV pigment ink(CMYK)
Work size	Max. 2,750mm ×1,250mm
Software	Windows application
Print speed	Approx.200 m ² /hr ※Max. work size, 2pass, bi-directional print, 600x600dpi

Shuttle type

This device prints an image by shuttling head on flat bed table. Respond to decoration purpose which is required high quality and small-lot production.

Stage JET IT-1



Direct printing on doors, partitions, large electrical home appliances, and steel plates.

Decorate life space with inkjet.

Direct printing on MDF, particle board, and large wooden materials.



※A part of picture is composite image.

The reason why Stage JET IT-1 selected

Reason1

Propose together with dedicated ink

We propose the printer with ink for wooden building materials.

All we need is the printer, substrates and ink? ————No, it's not perfect yet.

In some cases, it may need primer to make inks adhered against top coat to protect print surface.

Tritek proposes proven combination of primer, ink, and top coat to users.

We introduce products that have been tested compatibility between primer and ink, ink and top coat.



Ink for interior materials

We introduce primer and coat material.



dedicated primer



dedicated top coat

●About the ink

Types	Appearance	
UV ink for interior material(CMYK)	brown colored 1L bottle	We arrange suitable ink for interior materials for Stage JET IT-1. Price is according to purchase volume. Please contact us.
dedicated cleaner	brown colored 1L bottle	

■To exchange ink, switches ink bottle. ■It may not get good image quality using recommendation ink depend on materials. Please evaluate and confirm image quality before installation the device. ■Please confirm and judge about weather resistance of ink by users. ■Read MSDS on handling inks, and use it keeping expiration date.

Reason2

Specially designed specifications for interior materials

IT-1 has various functions for printing on interior materials such as suction and mounting jig suited for wooden materials and steel plates, including self-developed software.

(1) Positioning with air flow table **Easy handling of heavy and large materials**

(2) Work height detection & Auto adjustment function

Work thickness is different depend on works, it's necessary to adjust a space between head nozzle and work surface. IT-1 has Auto adjustment function to adjust carriage to proper position by scanning on the work before printing for detecting work height.

Reason3

High speed & high image quality

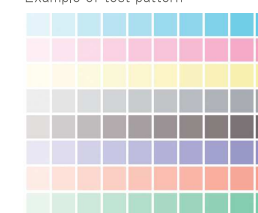
Achieve high productivity 200m²/hr, at 600x600dpi, 2pass printing.

Pretesting

You can have test printing before installation using our demo machine.

Make a printing sample for quality check and physical material test.

Example of test pattern



After-sales support

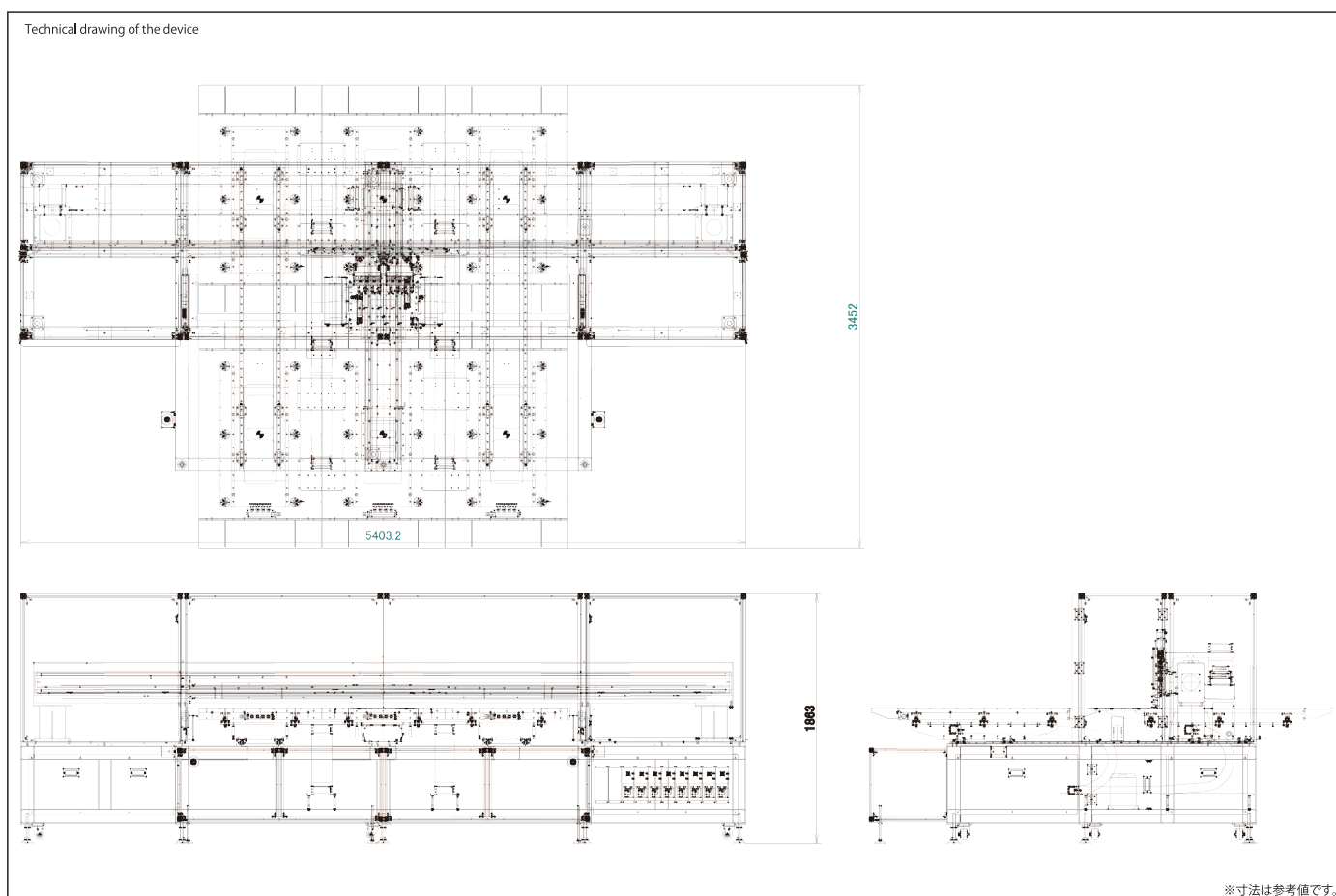
① In case of any trouble has occurred in the device, send us LOG file by e-mail. Then we will find the cause of the trouble and make the countermeasure.(Remote support)

② We will handle that by having a business trip either domestic or overseas when it's not possible to correspond in remote support. Tritex Suzhou staff will support the customer in China.

③ To prevent any trouble occurs, we recommend making maintenance contract which include visiting maintenance at twice to 4 times a year.

●Standard specifications

Items	Standard specifications(customizable)
Print technology	Drop-on-demand piezoelectric inkjet print head
Ink	Dedicated UV organic pigment ink with high weather resistance. 4 colors(CMYK) and possible to extend up to 8 colors.
Primer/Top coat	Propose materials considering adhesion, coloring etc. Those materials have done physical material test with ink.
Work size	Max.2,750mm×1,250mm, thickness up to 60mm
Productivity	Approx.200㎡/hr at 600×600dpi, 2pass, bi-directional print with Max. work size. Approx.100㎡/hr at 4pass. (Excluding the time to attach and detach work)
Fixing substrates	Positioning by abutting, vacuum suction
Print mode	<ul style="list-style-type: none"> • Bidirectional/Unidirectional • select from 2,3,4,6,8pass • 600×600dpi or 1,200×1,200dpi
Ink supply system	Auto ink supply from main tank
Head maintenance	Auto wiping
Head capping	Manual head capping for head protection is attached.
Print data format	Tiff file separated to CMYK
Rip software	We propose RIP software as necessary.(option) We can support basic operations and making ICC profile after purchases our recommended products.
Image conversion	Technical support to convert the image designed by customer to print data is available.
Control software	• Windows application
Dimensions	5,400mm(W)×3,500mm(D)×1,900mm(H)
Weight	Approx. 2.0t
Safety measures	<ul style="list-style-type: none"> • All drive system stops by pressing emergency stop button • UV cover



■Details of the device, printing sample, price etc. please contact us. ■Device specification is subject change for improvement. ■You can purchase expendable/maintenance parts from us. ■Colors of pictures in this catalog may different from actual objects. ■Windows is a trademark of Microsoft Corporation registered in the United States.

Creation date: 9/Sep/2014

Please note that catalog contents are subject to change for technical improvement without prior notice.

お問合せ先 **Tritek** 株式会社トライテック
〒945-0114 新潟県柏崎市藤井1995-2

TEL 0257-24-7113 FAX 0257-24-7550

URL <https://www.tritek.co.jp>